

TX-1919RGBWS60A16M12-10H90

PRODUCT SPECIFICATION

Features:

- ◆ Excellent transiting heat from LED chip operating under RGBWS:350mA .
- ◆ Mixing any two colors of light,there will be no partial color and color spots uneven phenomenon.
- ◆ High luminous output.
- ◆ No UV.
- ◆ Encapsulated materials are environmentally certified and meet environmental requirements.

Chip Material:

- ◆ Red:AlGaInP
- ◆ Green:GaInN
- ◆ Blue:GaN
- ◆ Warm White:GaN
- ◆ White:GaN

Emitting Color:

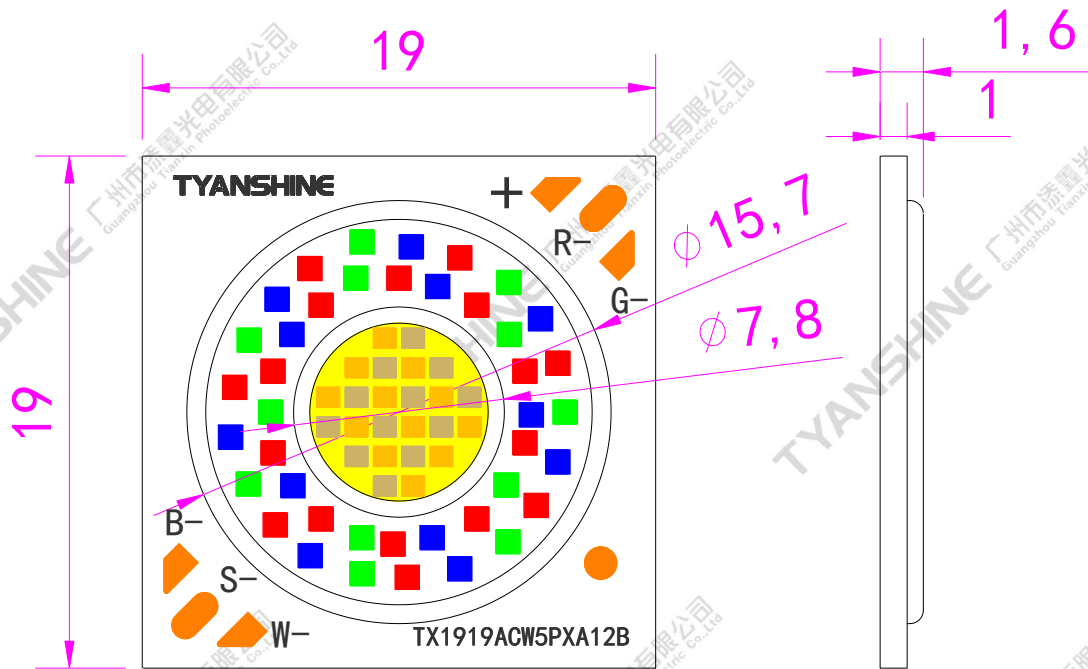
- ◆ Red
- ◆ Green
- ◆ Blue
- ◆ Warm White
- ◆ White

Applications:

- ◆ Indoor lighting
- ◆ Outdoor lighting
- ◆ Industrial Lighting
- ◆ Consumer Lighting
- ◆ Consumer Lighting

Part No.	TX-1919RGBWS60A16M12-10H90	Spec No.	WKF-DA0073	Page	1 of 8
-----------------	----------------------------	-----------------	------------	-------------	--------

Package Dimensions:



R-red; G-green; W-white; S-warm white; B-blue

Notes:

1. All dimensions are in millimeters (inches).
2. Tolerance is ± 0.25 mm (0.01") unless otherwise noted.

Absolute Maximum Ratings at Ta=25°C

Parameter	Symbol	MAX.	Unit
LED Junction Temperature	T _j	110	°C
Power Dissipation	P _D	R	12000
		G	12000
		B	12000
		W	12000
		S	12000
Continuous Forward Current	I _F	R	350
		G	350
		B	350
		W	350
		S	350
Reverse Voltage	V _R	—	V
Electrostatic Discharge Threshold (ESD)	ESD	2000	V
Operating Temperature Range	T _{opr}	-30 to +70	°C
Storage Temperature Range	T _{spr}	-30 to +80	

Notes:

- Specifications are subject to change without notice.
- The data on this specification is for reference only and the actual data is in accordance with the acknowledgment.
- Precautions for ESD:
 STATIC SHIELD Electricity and surge damages the LED. It is recommended to use a wrist band or anti-electrostatic glove when handling the LED. All devices, equipment and machinery must be properly grounded.

Characteristics (Ta=25°C,R/G/B/W/S:IF=350mA):

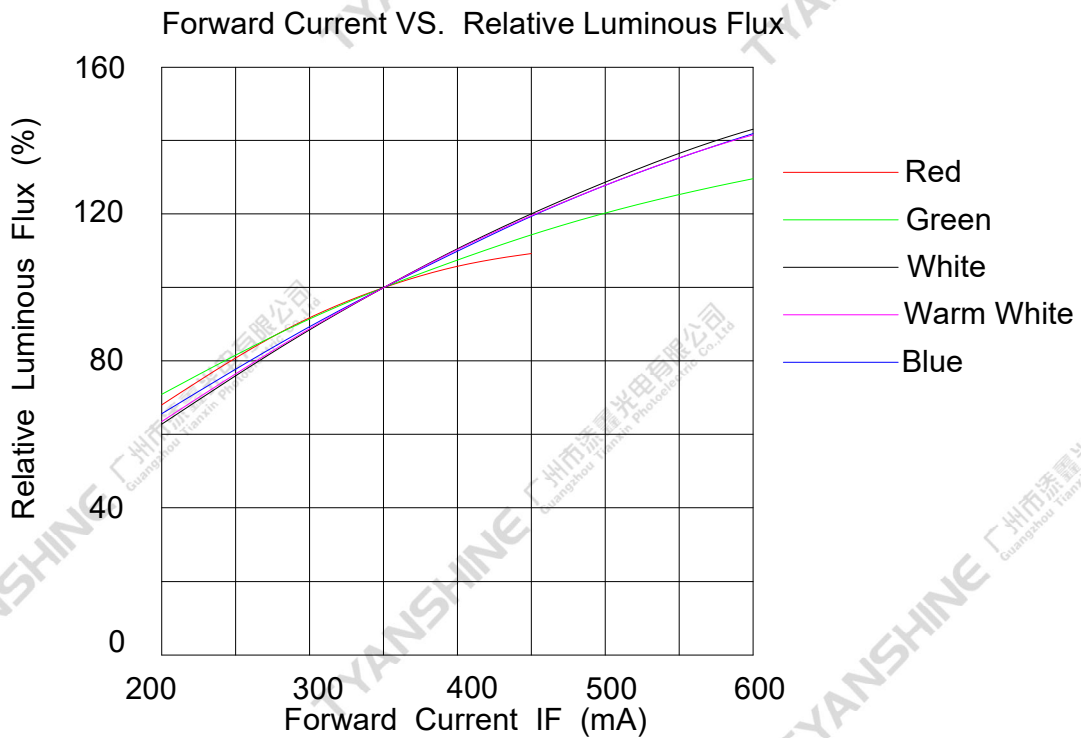
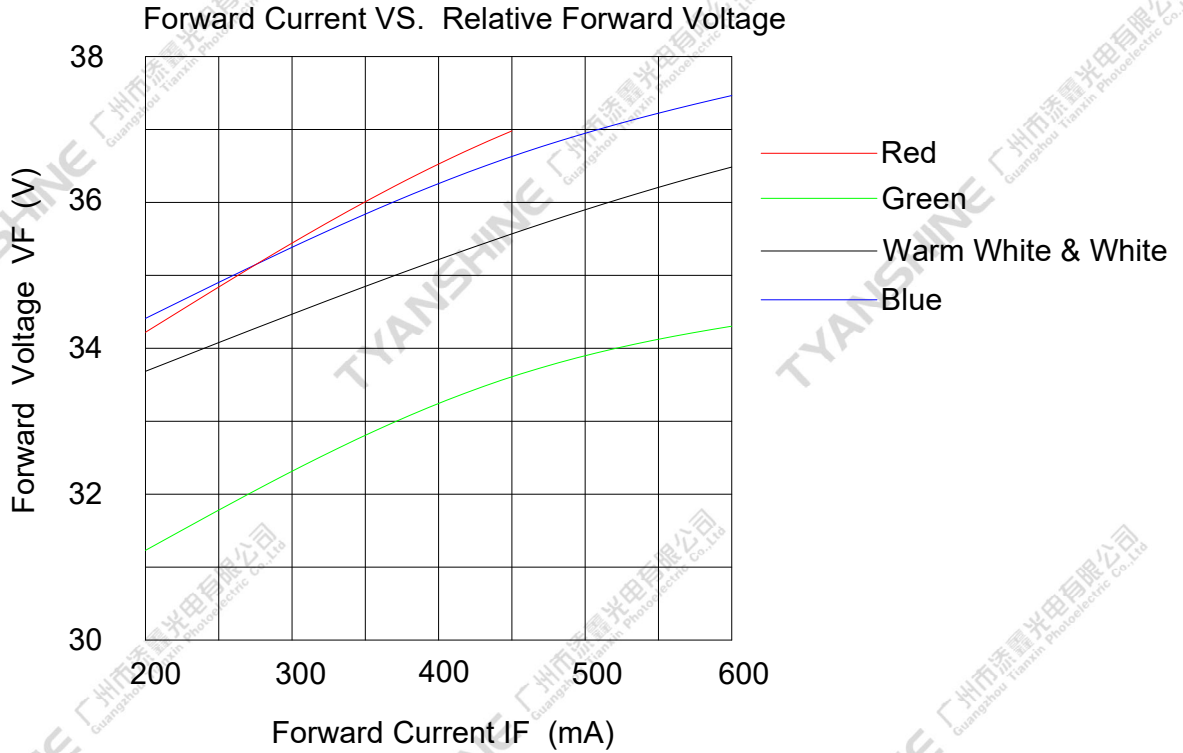
Parameter	Symbol	Emitting Color	Values			Units
			Min.	Typ.	Max.	
Luminous Flux	ϕ_v	R	450	650	—	lm
		G	800	1100	—	
		B	150	250	—	
		W	1100	1400	—	
		S	800	1100	—	
Viewing Angle at 50 % IV	$2\theta_{1/2}$	R	—	115	—	Deg
		G	—	115	—	
		B	—	115	—	
		W	—	115	—	
		S	—	115	—	
Peak Emission Wavelength	λ_p	R	630	635	640	nm
		G	515	520	525	
		B	445	450	455	
Dominant Wavelength	λ_d	R	620	625	630	nm
		G	522	527	532	
		B	450	455	460	
Spectral Line Half-Width	$\Delta\lambda$	R	15	20	25	nm
		G	25	30	35	
		B	15	20	25	
Forward Voltage	V_f	R	33	36	39	V
		G	31	34	37	
		B	33	36	39	
		W	33	36	39	
		S	33	36	39	
Correlated Colour Temperature	CCT	W	6000	6300	6700	K
		S	2620	2700	2780	
Color Rendering Index	Ra	S	—	90	—	
		W	—	90	—	

Notes:

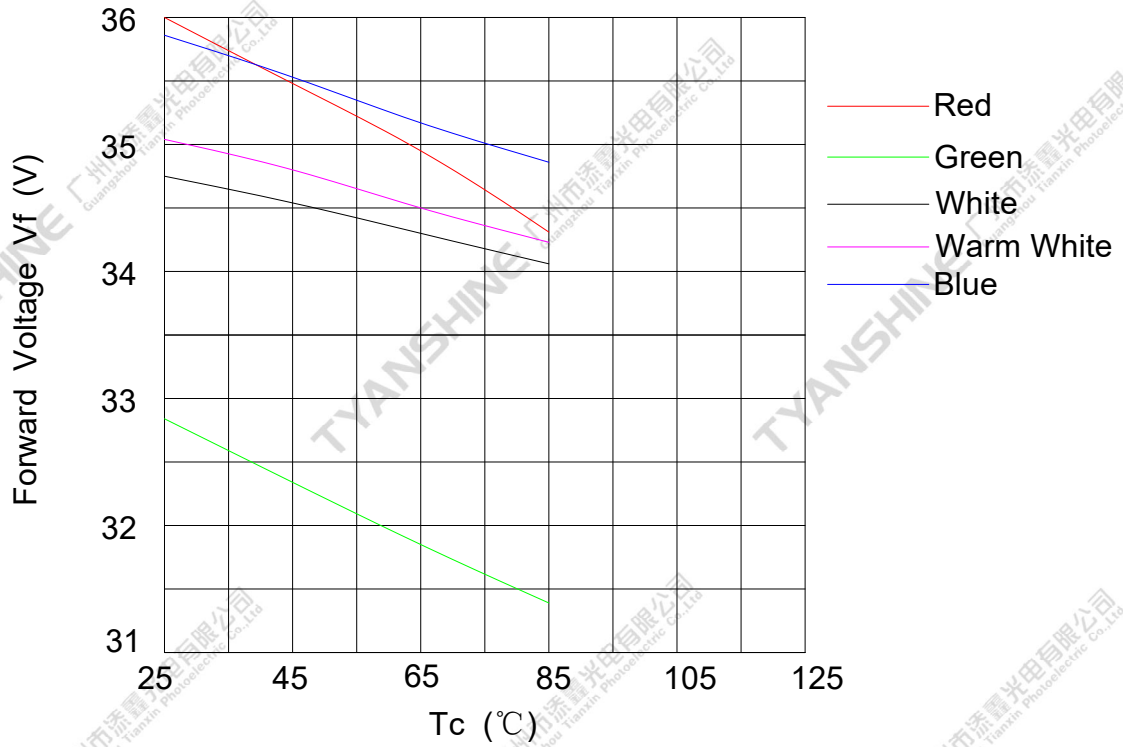
- Luminous intensity is measured with a light sensor and filter combination that approximates the CIE eye-response curve.
- $\theta_{1/2}$ is the off-axis angle at which the luminous intensity is half the axial luminous intensity
- The dominant wavelength (λ_d) is derived from the CIE chromaticity diagram and represents the single wavelength which defines the color of the device.
- Flux is measured with an accuracy of $\pm 15\%$.
- Forward voltage is measured with an accuracy of $\pm 0.15V$.

Typical Electrical / Optical Characteristics Curves

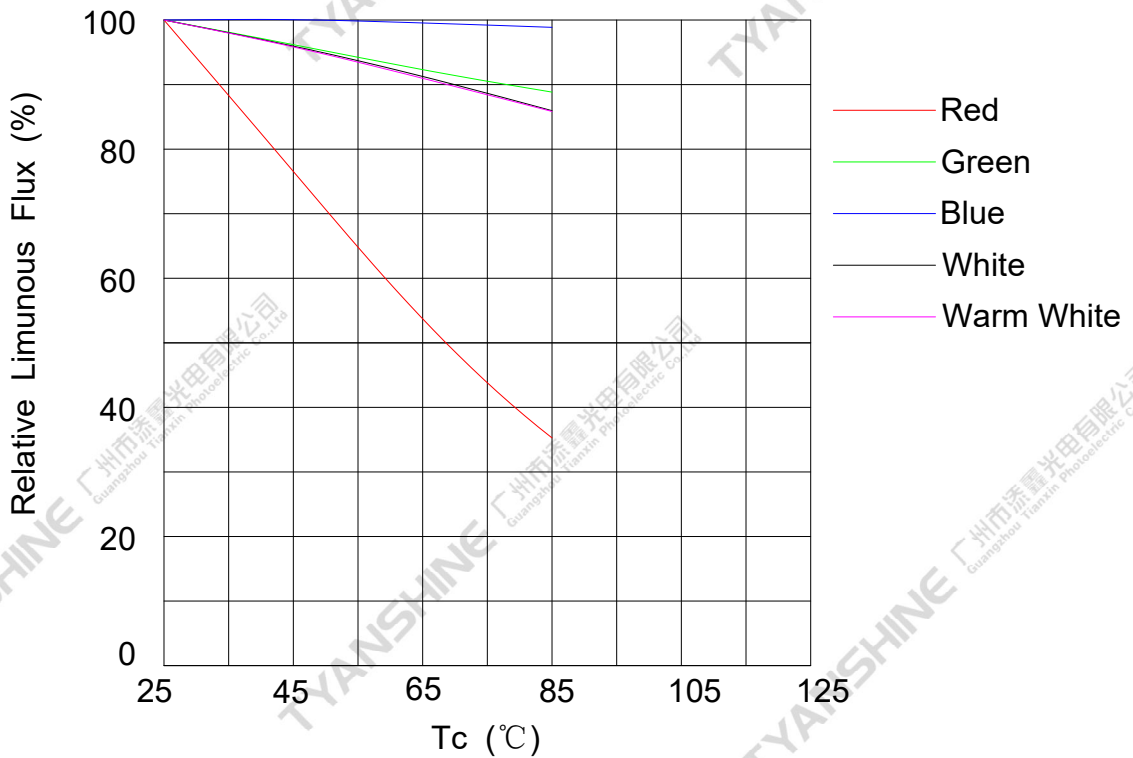
(25°C Ambient Temperature Unless Otherwise Noted)

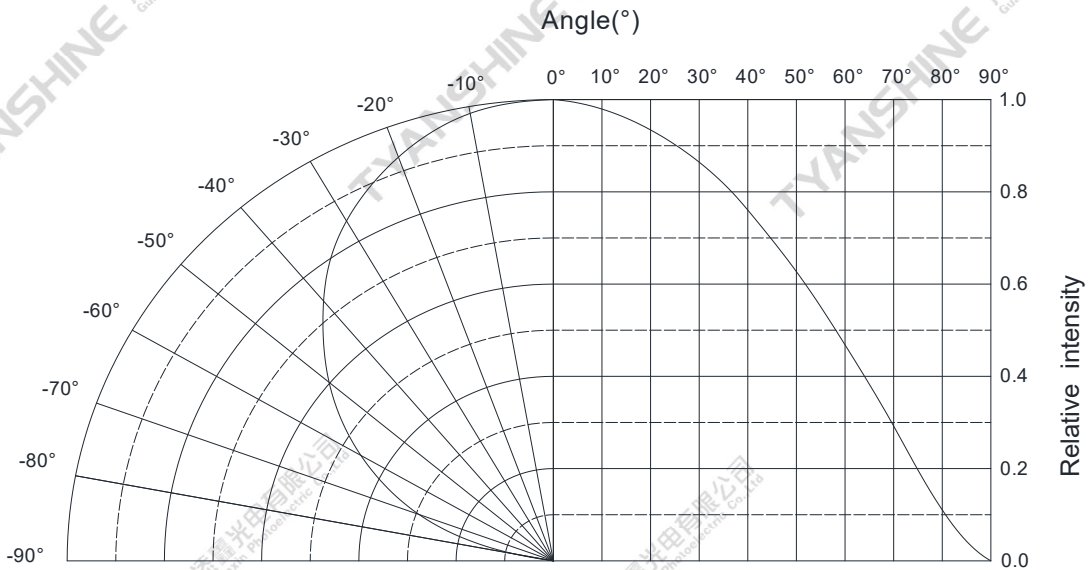
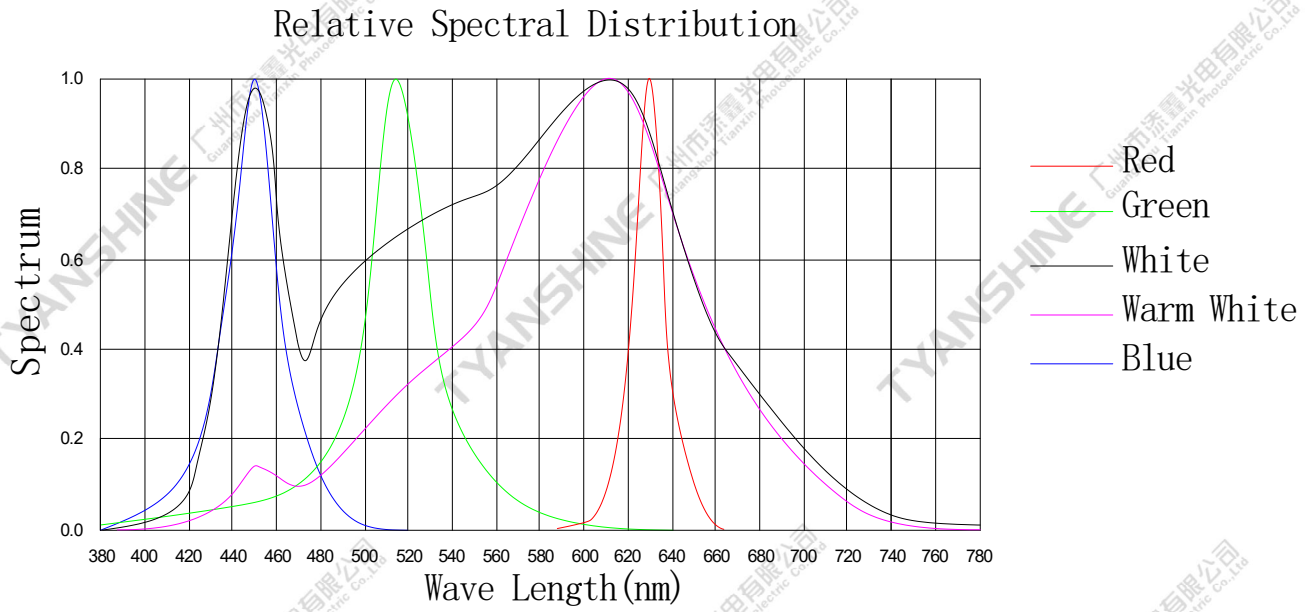


Temperature VS. Forward Voltage (IF=350mA)



Temperature VS. Relative Luminous FLux (IF=350mA)





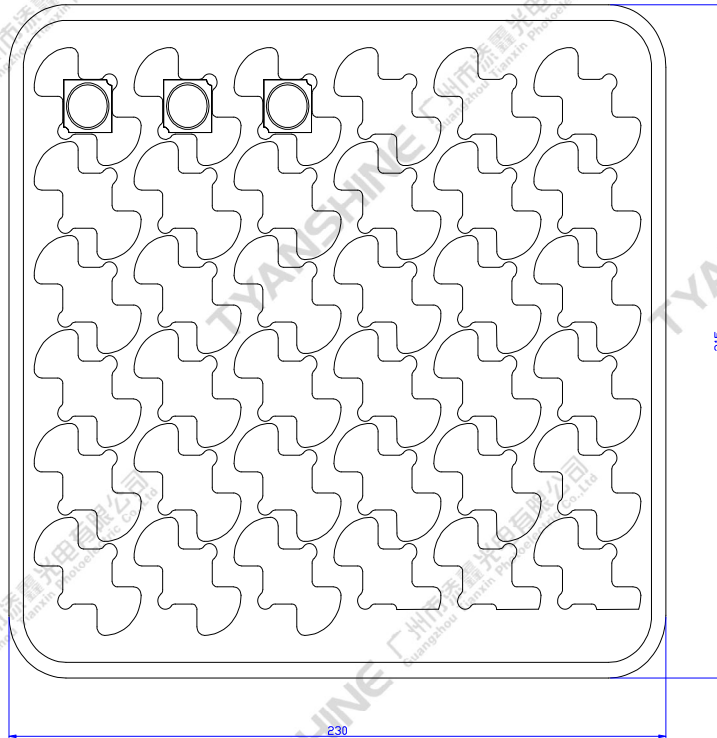
Notes:

- 1. $2\theta_{1/2}$ is the off axis angle from lamp centerline where the luminous intensity is 1/2 of the peak value.
- 2. View angle tolerance is $\pm 5^\circ$.

Part No.	TX-1919RGBWS60A16M12-10H90	Spec No.	WKF-DA0073	Page	7 of 8
-----------------	----------------------------	-----------------	------------	-------------	--------

Dimensions For Cannulation And Packaging

Quantity: 36PCS



Notes:

1. All dimensions are in millimeters.
2. Tolerances are ± 2.0 mm unless otherwise noted.
3. The products are packaged together with silica gel, Transport, not to the weight of welding LED light-emitting area, As a result of the weight of LED light-emitting zone in the quality of, Irresponsible of the Company.

Part No.	TX-1919RGBWS60A16M12-10H90	Spec No.	WKF-DA0073	Page	8 of 8
-----------------	----------------------------	-----------------	------------	-------------	--------