

TX-5266W450FC120-NUFENW-C01H95

PRODUCT SPECIFICATION

Features:

- ◆ Excellent transiting heat from LED chip operating under 13.5A.
- ◆ High luminous output.
- ◆ No UV.
- ◆ Encapsulated materials are environmentally certified and meet environmental requirements.

Chip Material:

- ◆ GaN

Emitting Color:

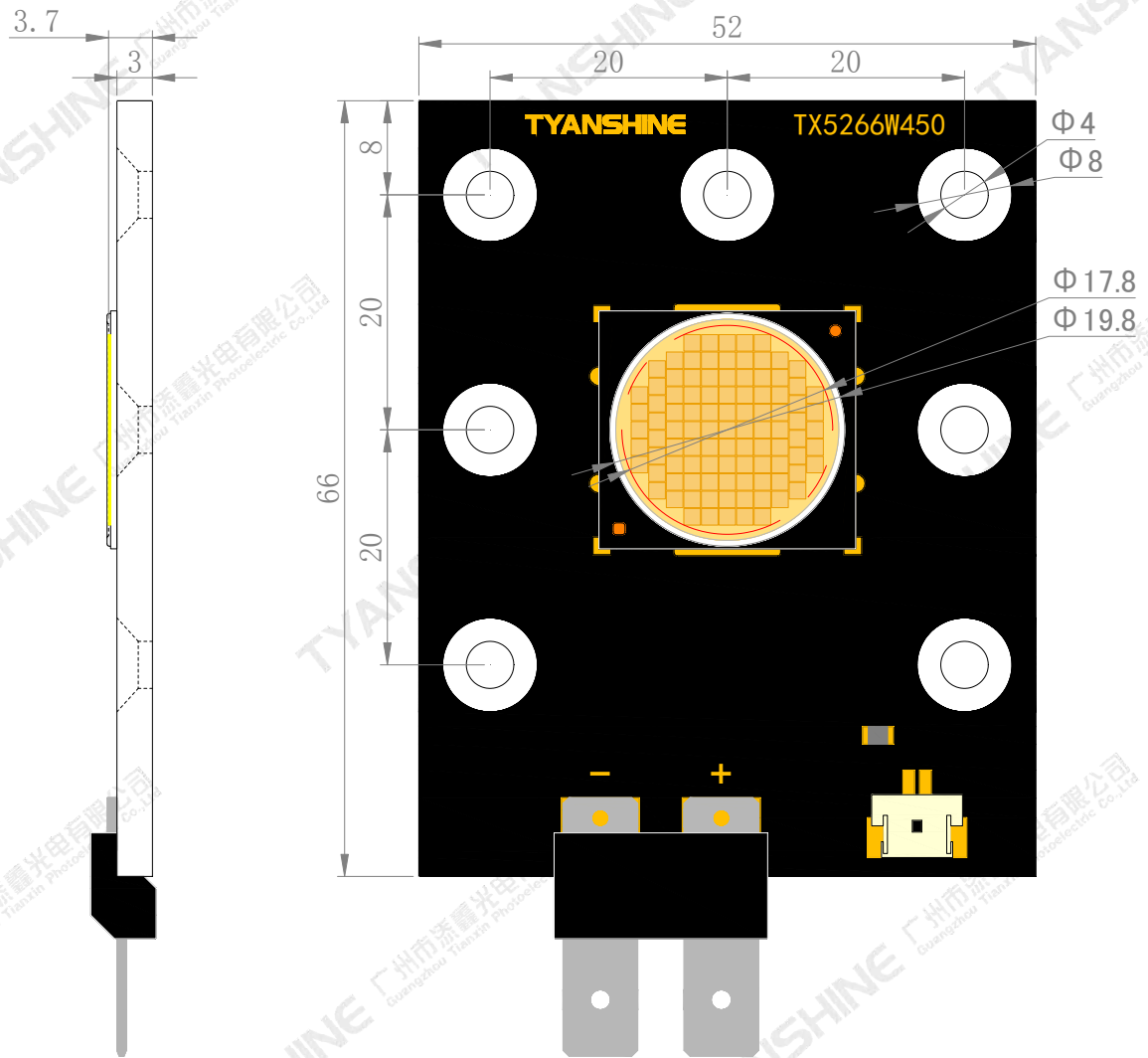
- ◆ Warm White

Applications:

- ◆ Auxiliary lighting
- ◆ Architectural lighting

Part No.	TX-5266W450FC120-NUFENW-C01H95	Spec No.	WKF-BE0953	Page	1 of 8
----------	--------------------------------	----------	------------	------	--------

Package Dimensions:



Notes:

- 1.All dimensions are in millimeters .
- 2.Tolerances unless otherwise mentioned are ± 0.1 mm .

Absolute Maximum Ratings (Tc=25°C)

Parameter	Symbol	Ratings	Unit
Forward Current	IF	13.5	A
Reverse Voltage	VR	Not designed for reverse operation	V
Power Dissipation	PD	468	W
Junction Temperature	Tj	150	°C
Electrostatic Discharge Threshold (ESD)	ESD	2000	V
Storage Temperature	Tstg	-20~+70	°C
Operation Temperature	Topr	-30~+100	

Notes:

1.Specifications are subject to change without notice.

2.The data on this specification is for reference only and the actual data is in accordance with the acknowledgment.

3.Precautions for ESD:

STATIC SHIELD Electricity and surge damages the LED. It is recommended to use a wrist band or anti-electrostatic glove when handling the LED. All devices, equipment and machinery must be properly grounded.

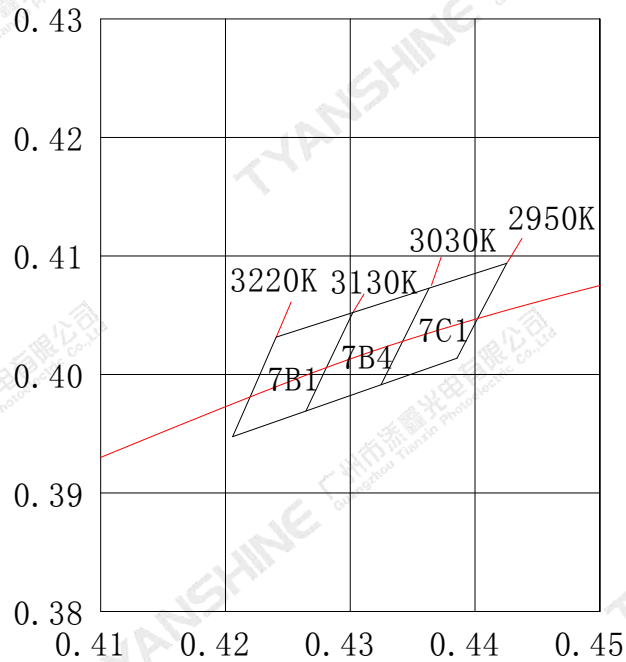
Electrical Optical Characteristics

Parameter	Symbol	Condition	Emitting Color	Min.	Typ.	Max.	Units
Luminous Flux	Φ_v	If=13A (Tc=25℃)	W	22000	25000	28000	lm
		If=13A (Tc=85℃)	W	17850	20300	22800	
Correlated Colour Temperature	CCT	If=13A (Tc=25℃)	W	2950	—	3220	K
		If=13A (Tc=85℃)	W	2955	—	3250	
Forward Voltage	V_f	If=13A (Tc=25℃)	W	33	35	37	V
		If=13A (Tc=85℃)	W	32.5	34.5	36.5	
Viewing Angle at 50% IV	$2\theta_{1/2}$	—	—	—	120	—	Deg
Spectral Line Half-Width	$\Delta\lambda$	If=13A (Tc=25℃)	W	175	180	185	nm
		If=13A (Tc=85℃)	W	170	175	180	
Reverse Current	I_R	—	—	—	—	—	μA
Color Rendering Index	Ra	—	—	95	97	—	—
Thermal Resistance Junction to Case	$R\theta_{J-C}$	—	—	—	0.036	—	K/W
Temperature Coefficient of Voltage	$V\Delta F/T$	If=13A	—	—	-8.3	—	mV/℃
Thermistor(NTC)	Rt25	—	—	—	10	—	K Ω

Notes:

- 1.Luminous intensity is measured with a light sensor and filter combination that approximates the CIE eye-response curve.
2. $\theta_{1/2}$ is the off-axis angle at which the luminous intensity is half the axial luminous intensity.
- 3.Luminous flux measurement tolerance:±15%.
- 4.Forward voltage measurement tolerance:±0.15V.

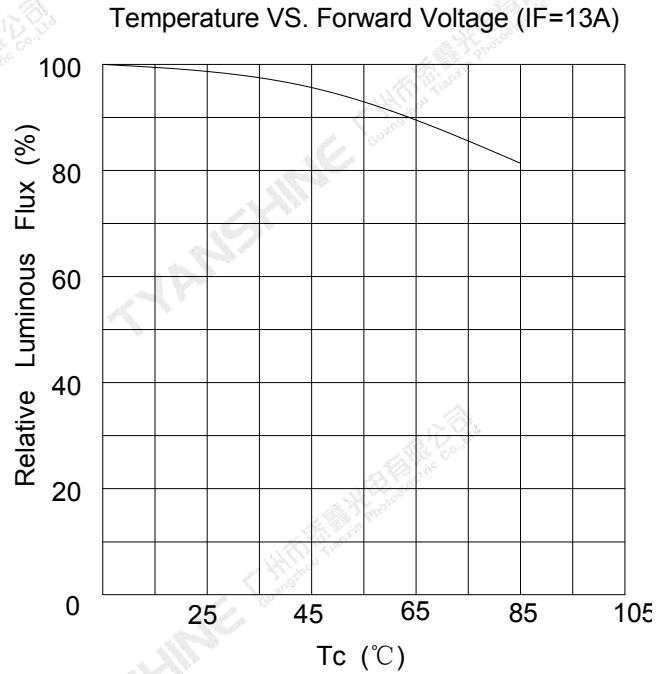
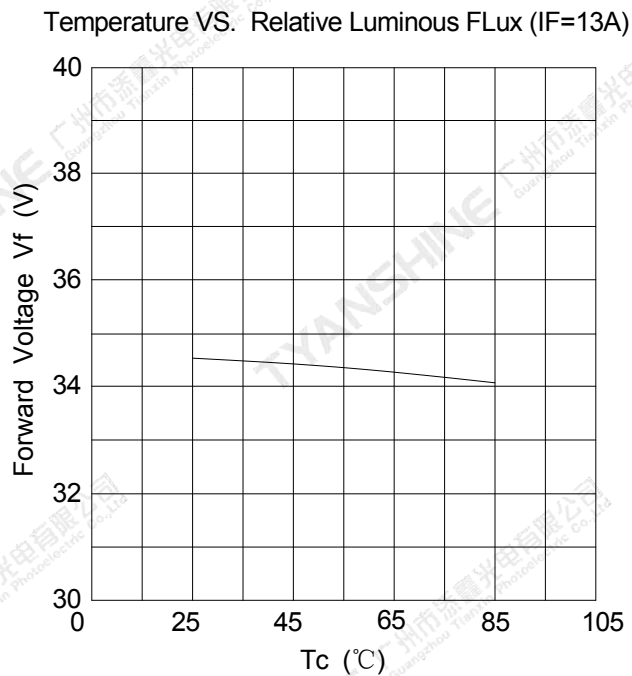
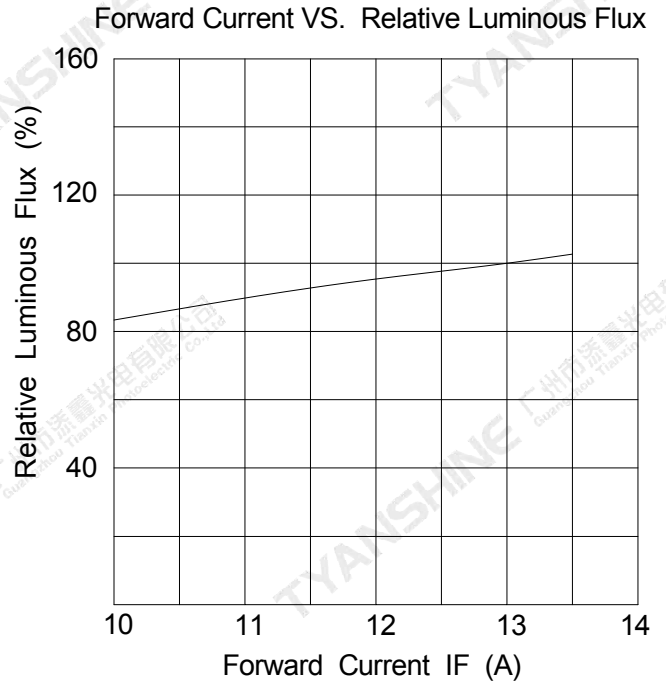
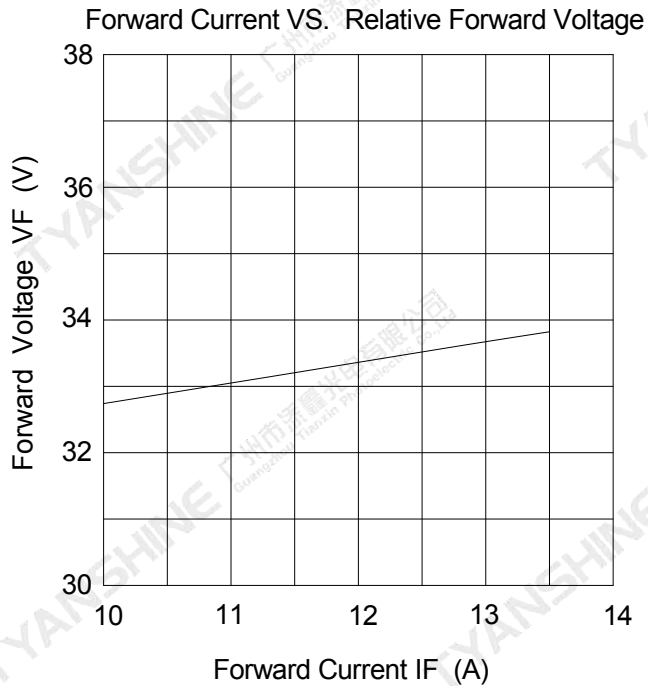
White light Color coordinate filing (Tc=25℃)

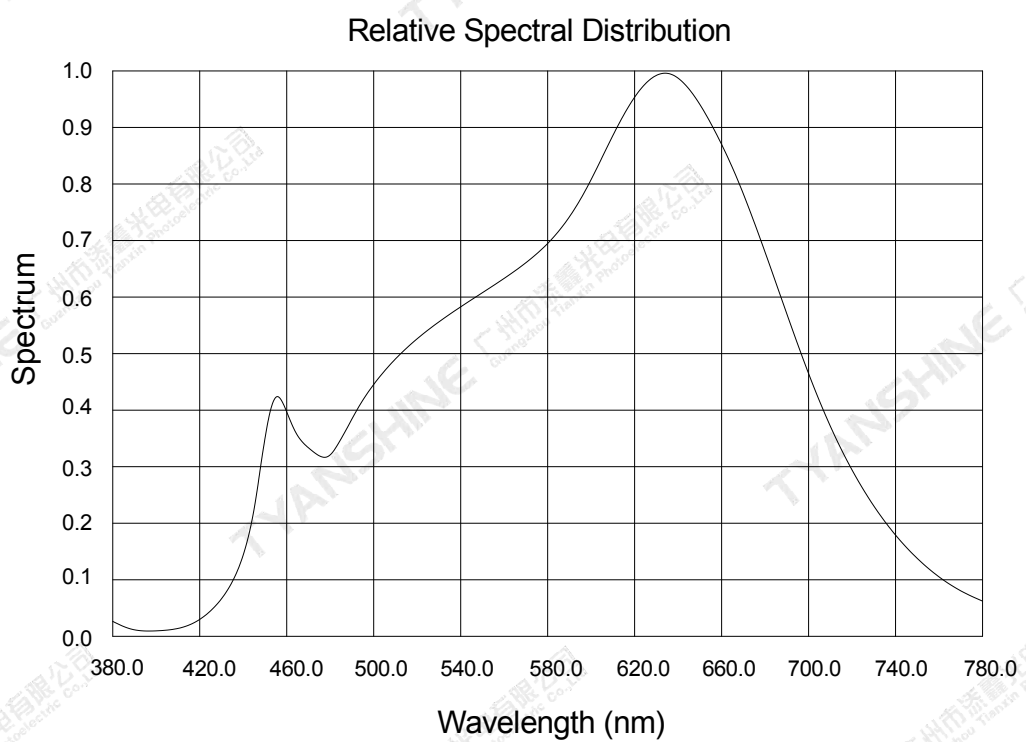
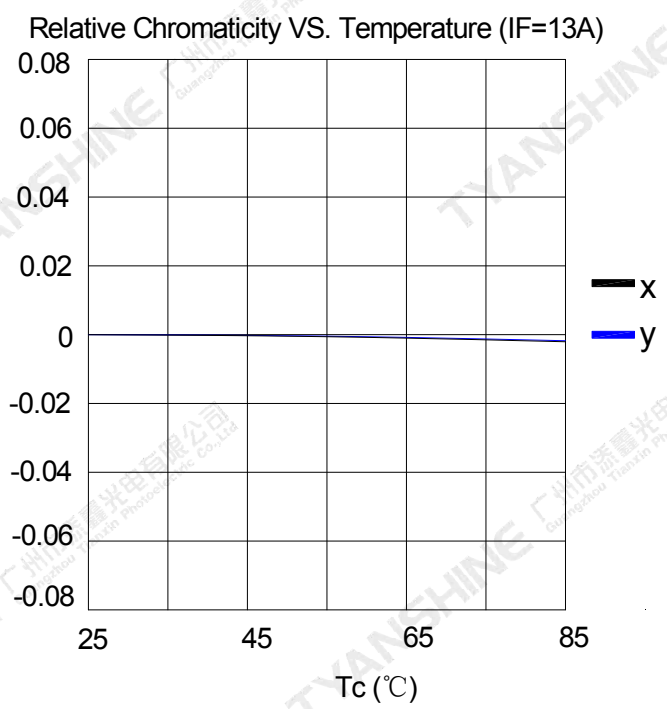
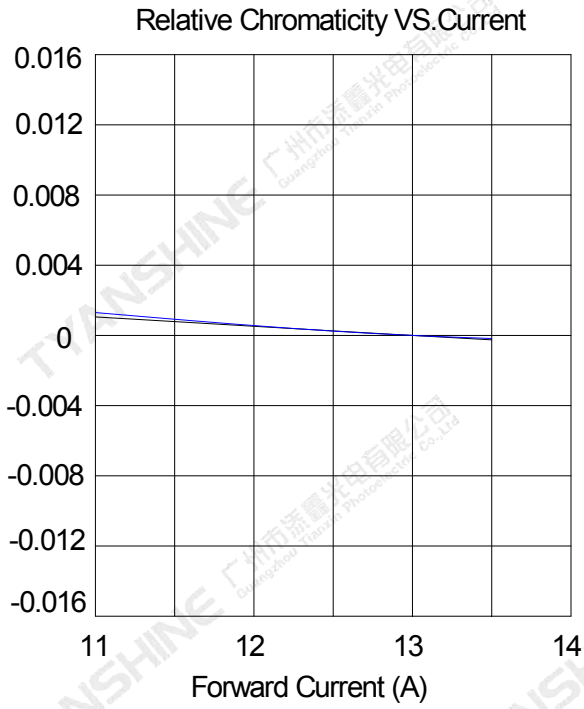


Grade	TC	P1		P2		P3		P4	
		X1	Y1	X2	Y2	X3	Y3	X4	Y4
7B1	3130-3220K	0.4206	0.3948	0.4241	0.4032	0.4302	0.4052	0.4264	0.3969
7B4	3030-3130K	0.4264	0.3969	0.4302	0.4052	0.4363	0.4073	0.4325	0.3991
7C1	2950-3030K	0.4325	0.3991	0.4363	0.4073	0.4425	0.4094	0.4386	0.4014

Typical Electrical/Optical Characteristics Curves

(25°C Ambient Temperature Unless Otherwise Noted)





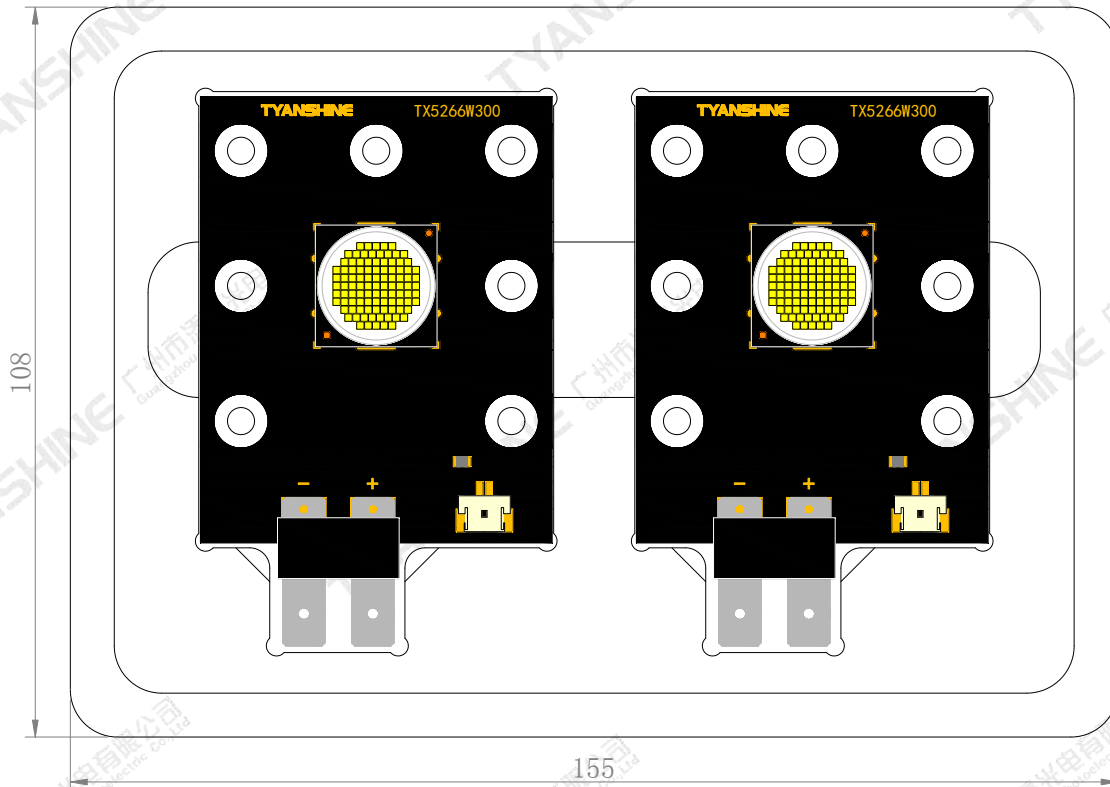
Notes:

1. $2\theta_{1/2}$ is the off axis angle from lamp centerline where the luminous intensity is 1/2 of the peak value.
2. View angle tolerance is $\pm 5^\circ$.

Part No.	TX-5266W450FC120-NUFENW-C01H95	Spec No.	WKF-BE0953	Page	7 of 8
----------	--------------------------------	----------	------------	------	--------

Dimensions For Cannulation And Packaging

Quantity:2 PCS



Notes:

1. All dimensions are in millimeters.
2. Tolerances are ± 2.0 mm unless otherwise noted.
3. The products are packaged together with silica gel, Transport, not to the weight of welding LED light-emitting area, As a result of the weight of LED light-emitting zone in the quality of, Irresponsible of the Company.

Part No.	TX-5266W450FC120-NUFENW-C01H95	Spec No.	WKF-BE0953	Page	8 of 8
----------	--------------------------------	----------	------------	------	--------