

TX-5266W600FC120-NUVENG-A01H80

PRODUCT SPECIFICATION

Features:

- ◆ Excellent transiting heat from LED chip operating under 8A.
- ◆ High luminous output.
- ◆ No UV.
- ◆ Encapsulated materials are environmentally certified and meet environmental requirements.

Chip Material:

- ◆ ThinGaN

Emitting Color:

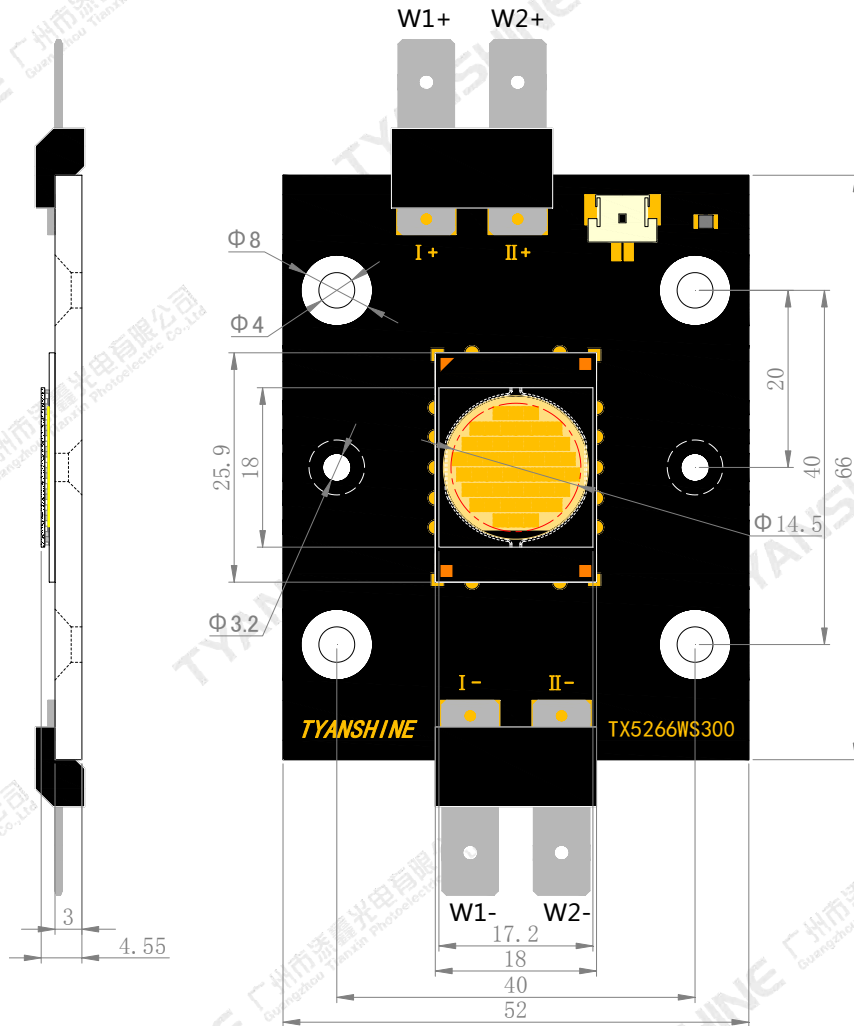
- ◆ White

Applications:

- ◆ Auxiliary lighting
- ◆ Architectural lighting

Part No.	TX-5266W600FC120-NUVENG-A01H80	Spec No.	WKF-BE0380	Page	1 of 7
----------	--------------------------------	----------	------------	------	--------

Package Dimensions:



Notes:

1. All dimensions are in millimeters .
2. Tolerances unless otherwise mentioned are ± 0.1 mm .

Absolute Maximum Ratings (Tc=27°C)

Parameter	Symbol	Ratings	Unit
Forward Current	IF	8000	mA
Reverse Voltage	VR	Not designed for reverse operation	V
Power Dissipation	PD	W1	296
		W2	296
Junction Temperature	Tj	150	°C
Electrostatic Discharge Threshold (ESD)	ESD	2000	V
Storage Temperature	Tstg	-20~+70	°C
Operation Temperature	Topr	-30~+100	

Notes:

- Specifications are subject to change without notice.
- The data on this specification is for reference only and the actual data is in accordance with the acknowledgment.
- Precautions for ESD:
 STATIC SHIELD Electricity and surge damages the LED. It is recommended to use a wrist band or anti-electrostatic glove when handling the LED. All devices, equipment and machinery must be properly grounded.

Electrical Optical Characteristics

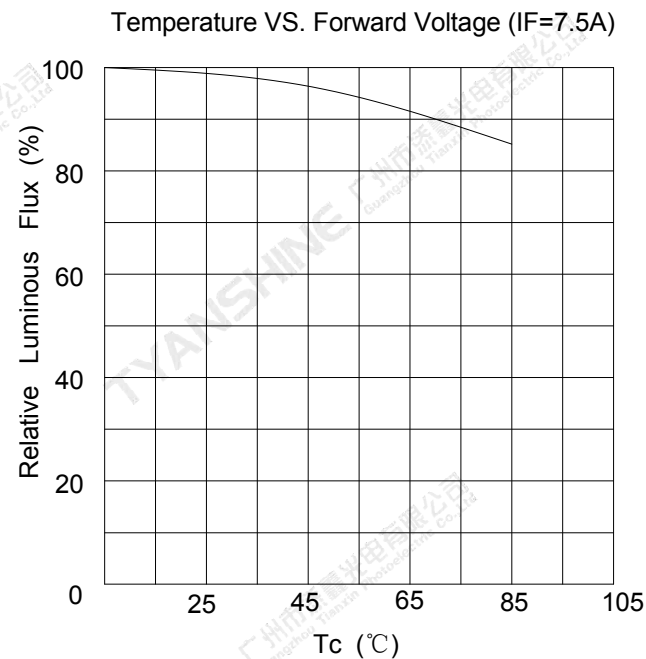
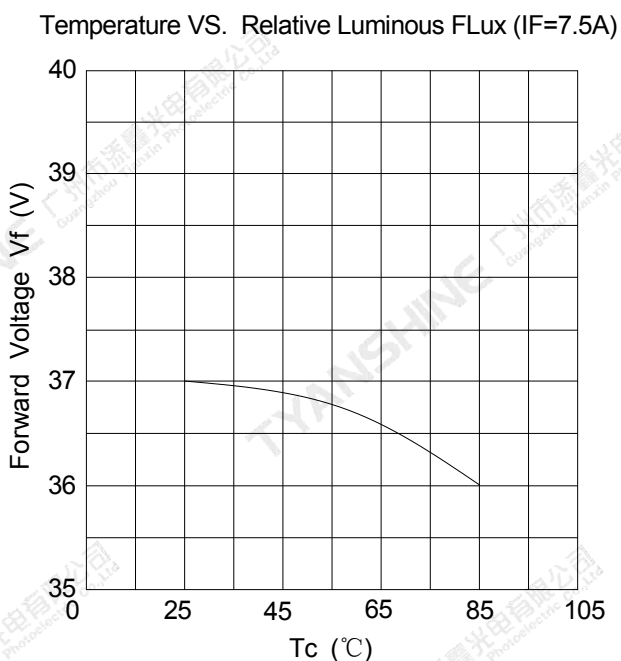
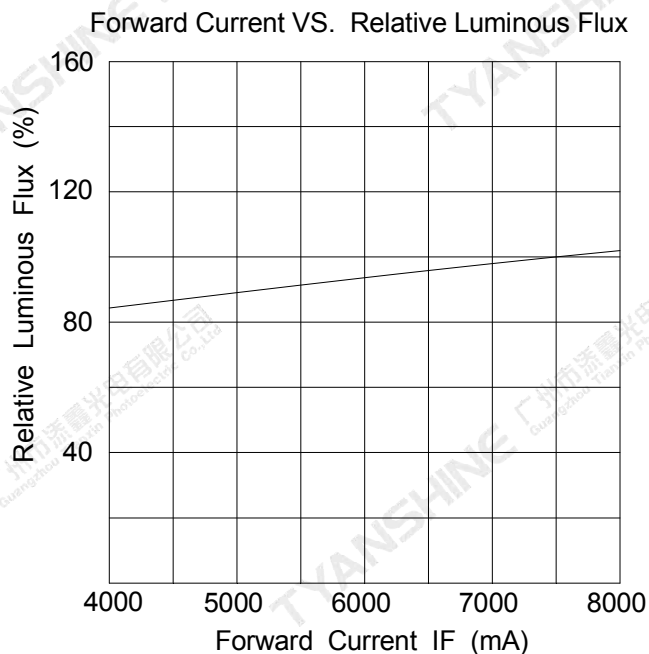
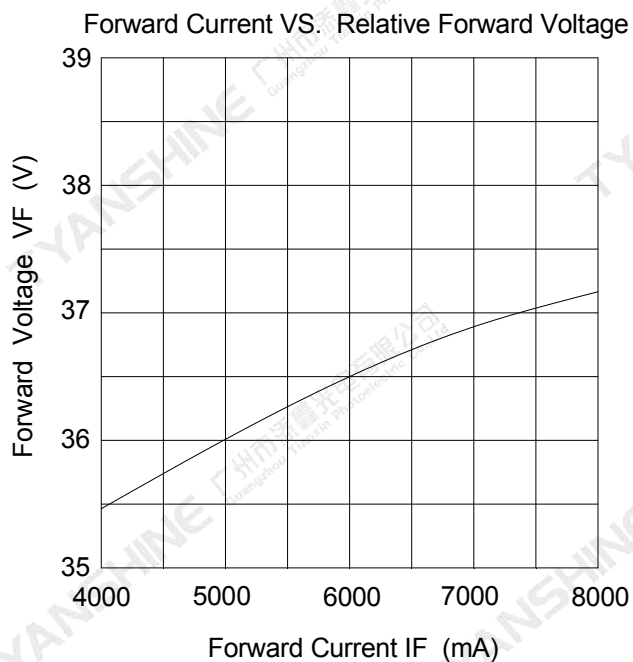
Parameter	Symbol		Condition	Min.	Typ.	Max.	Units
Luminous Flux	Φ_v (If=7.5A)	W1	Ta=27℃	18000	20000	22000	lm
			Ta=85℃	15200	16860	18550	
		W2	Ta=27℃	18000	20000	22000	
			Ta=85℃	15200	16860	18550	
Correlated Colour Temperature	CCT		Ta=27℃	6100	8000	9000	K
			Ta=85℃	6770	8880	9990	
Forward Voltage	V_f (If=7.5A)	W1	Ta=27℃	35	37	39	V
			Ta=85℃	34	36	38	
		W2	Ta=27℃	35	37	39	
			Ta=85℃	34	36	38	
Viewing Angle at 50% IV	$2\theta_{1/2}$		—	—	120	—	Deg
Spectral Line Half-Width	$\Delta\lambda$	(If=7.5A)	Ta=27℃	20	25	30	nm
			Ta=85℃	25	30	35	
Reverse Current	I_R		—	—	—	—	μA
Color Rendering Index	Ra		—	80	82	—	—
Thermal Resistance Junction to Case	$R_{\theta_{J-C}}$		—	—	0.05	—	K/W
Temperature Coefficient of Voltage	$V_{\Delta F/T}$ (If=7.5A)		—	—	-16.7	—	mV/℃
Thermistor(NTC)	Rt25		—	—	10	—	KΩ

Notes:

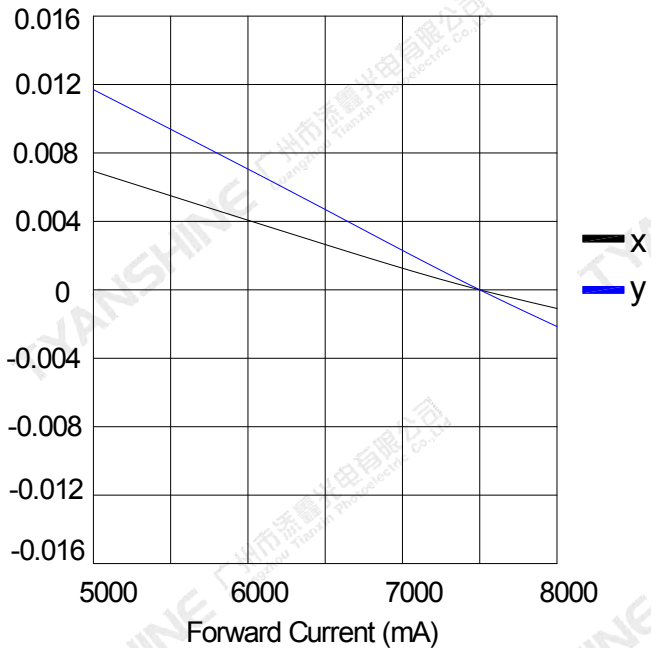
- Luminous intensity is measured with a light sensor and filter combination that approximates the CIE eye-response curve.
- $\theta_{1/2}$ is the off-axis angle at which the luminous intensity is half the axial luminous intensity.
- Luminous flux measurement tolerance:±15%.
- Forward voltage measurement tolerance:±0.15V.

Typical Electrical/Optical Characteristics Curves

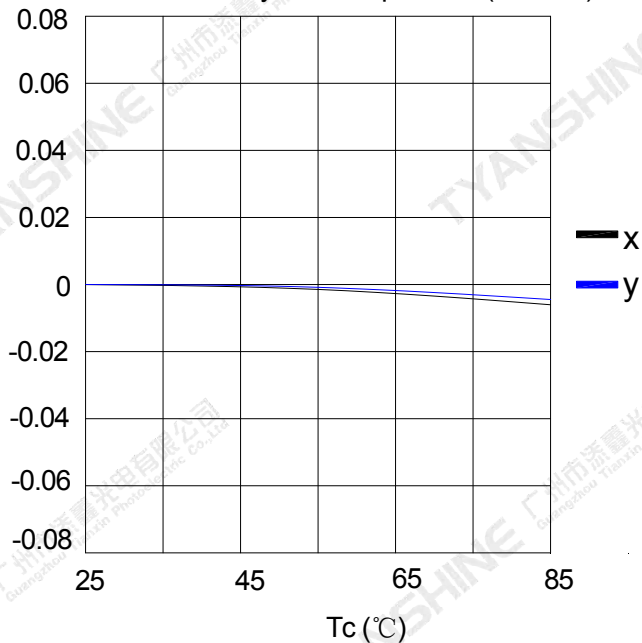
(25°C Ambient Temperature Unless Otherwise Noted)



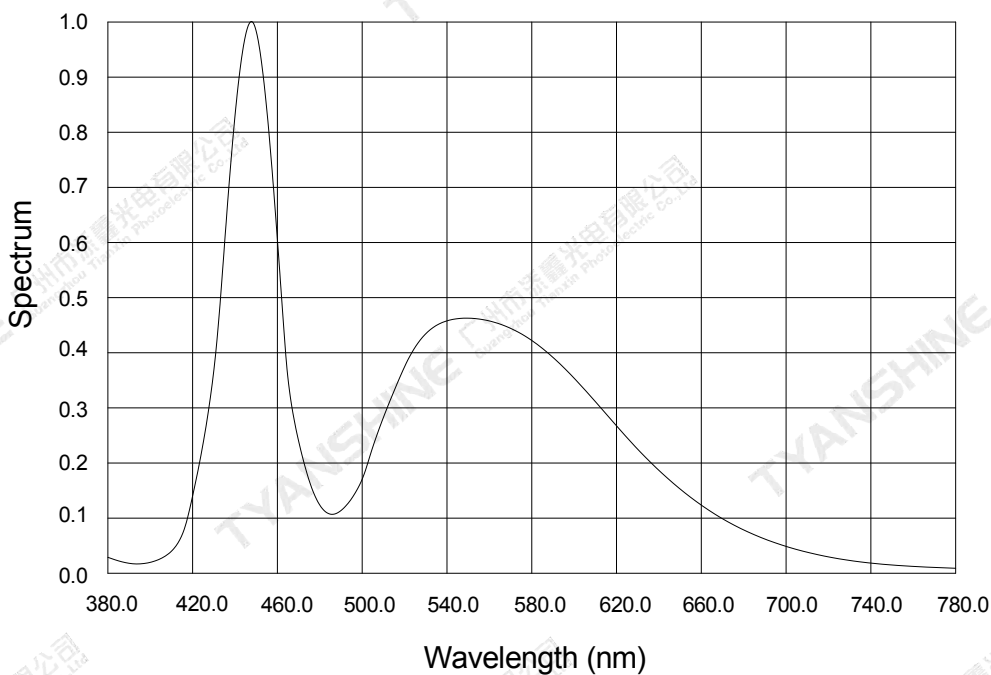
Relative Chromaticity VS. Current



Relative Chromaticity VS. Temperature (IF=7.5A)



Relative Spectral Distribution

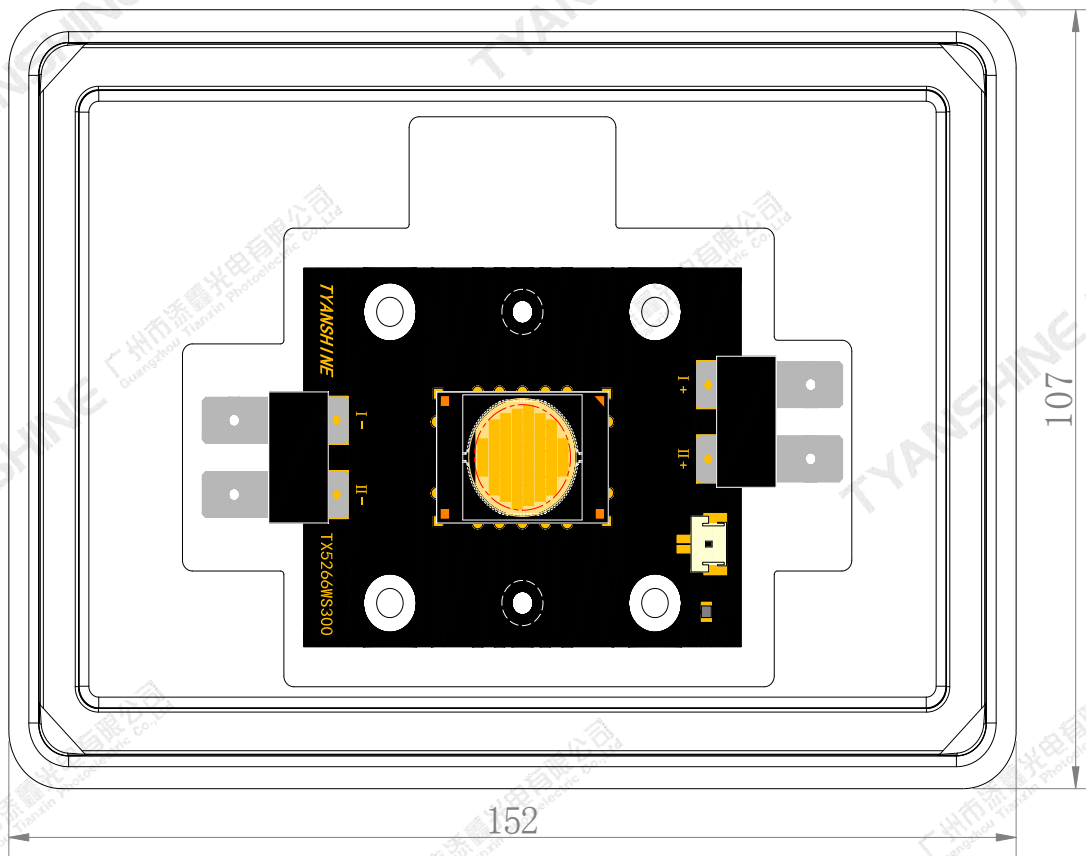


Notes:

1. $2\theta_{1/2}$ is the off axis angle from lamp centerline where the luminous intensity is 1/2 of the peak value.
2. View angle tolerance is $\pm 5^\circ$.

Dimensions For Cannulation And Packaging

Quantity:1 PCS



Notes:

1. All dimensions are in millimeters.
2. Tolerances are ± 2.0 mm unless otherwise noted.
3. The products are packaged together with silica gel, Transport, not to the weight of welding LED light-emitting area, As a result of the weight of LED light-emitting zone in the quality of, Irresponsible of the Company.

Part No.	TX-5266W600FC120-NUVENG-A01H80	Spec No.	WKF-BE0380	Page	7 of 7
----------	--------------------------------	----------	------------	------	--------